

Special Education Update



Pacifica School District
Board of Education Meeting
Wednesday, June 15, 2016

Philosophy

PSD Inclusion Definition

"Inclusive education in the Pacifica School District places a premium on equitable access to the general education classroom for all students, to the greatest extent appropriate, for educational, social, and community opportunities. Equitable access and availability of the same resources and materials to all students will be provided. Inclusion provides a supportive environment which includes positive relationships and opportunities to participate in all school wide activities. Our goal for all of our students is to promote their independence so that they can become active members of our community."

Board Approved January, 2014



Programs

Students Receiving Special Education Services

RSP (191)

OT (81)

SDC (97)

APE (17)

SPEECH (171)

ABA (27)

PT (14)

SCIA (15)

- *SOME STUDENTS RECEIVE MULTIPLE SERVICES*
- *TOTAL PERCENTAGE OF STUDENTS WITH SPECIAL NEEDS IN PSD IS **10%***

LMEC Preschool

Instruction

- 3 classes, 10 students, 2 paraprofessionals per class
- Cross Categorical
- Includes Students from North County Consortium
- 4 hour school day

Services On-site

- Speech
- Occupational Therapy
- Physical Therapy
- Applied Behavior Analysis (ABA)

Inclusion

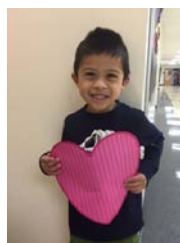
- Building Kidz Preschool
- Purchased 1 spot
- Rotate 6-8 students

Challenges

- Licensing
- Consistency
- Scheduling

Next Steps

- Move 1 class to Sunset Ridge
- Increase mainstreaming and inclusion options with City of Pacifica
- Expand continuum of services



Special Day Class: Moderate to Severe

- CABRILLO

- TK-1 Class
- Gr. 2-5 Class

- OCEAN SHORE

- Gr. 6-8 Class



Special Day Class: Mild to Moderate

- Ortega
 - TK-2 Class
 - 3-5 Class
- Sunset Ridge
 - TK-2 Class
 - Gr. 3-5 Class
- IBL
 - Gr. 6-8 Class



Resource Specialist Program

- On every campus
 - Traditional Model (1:28 ratio)
 - Pull-out, push-in, individual, small group
 - Intensive Intervention Model (1:14 ratio)
 - 1-3 class periods per day, 2-3 grade levels below
 - IBL only



Other Programs

- Pacifica School District
 - IBL: Middle School Milieu, gr. 6-8
- SMCOE
 - IBL: Autism, gr. 6-8
 - Ocean Shore: Severely Handicapped, gr. 4-8
 - Vallemar: Emotionally Disturbed, gr. 4-8



Extended School Year

- Purpose: sustain learning and skill development
- 3 hours per day, 5 days per week
- 19 days
- 6 classes serving pre-k-8thgrade



Other Services

- Adaptive Physical Education Specialist - .60 FTE
- Occupational Therapist – 2.0 FTE
- Speech and Language Pathologist – 4.0 FTE
- Speech and Language Assistant – 1.0 FTE
- Physical Therapist - .20 FTE





Support Personnel

Paraprofessional and Behaviorist

Paraprofessional

- Assigned to the classroom for daily support

Primary Responsibilities:

- Work as a team
- Build and maintain effective communication
- Maintain student-centered supportive environments
- Implement lessons initiated by the teacher or related-service personnel
- Assess student needs and progress under teacher direction

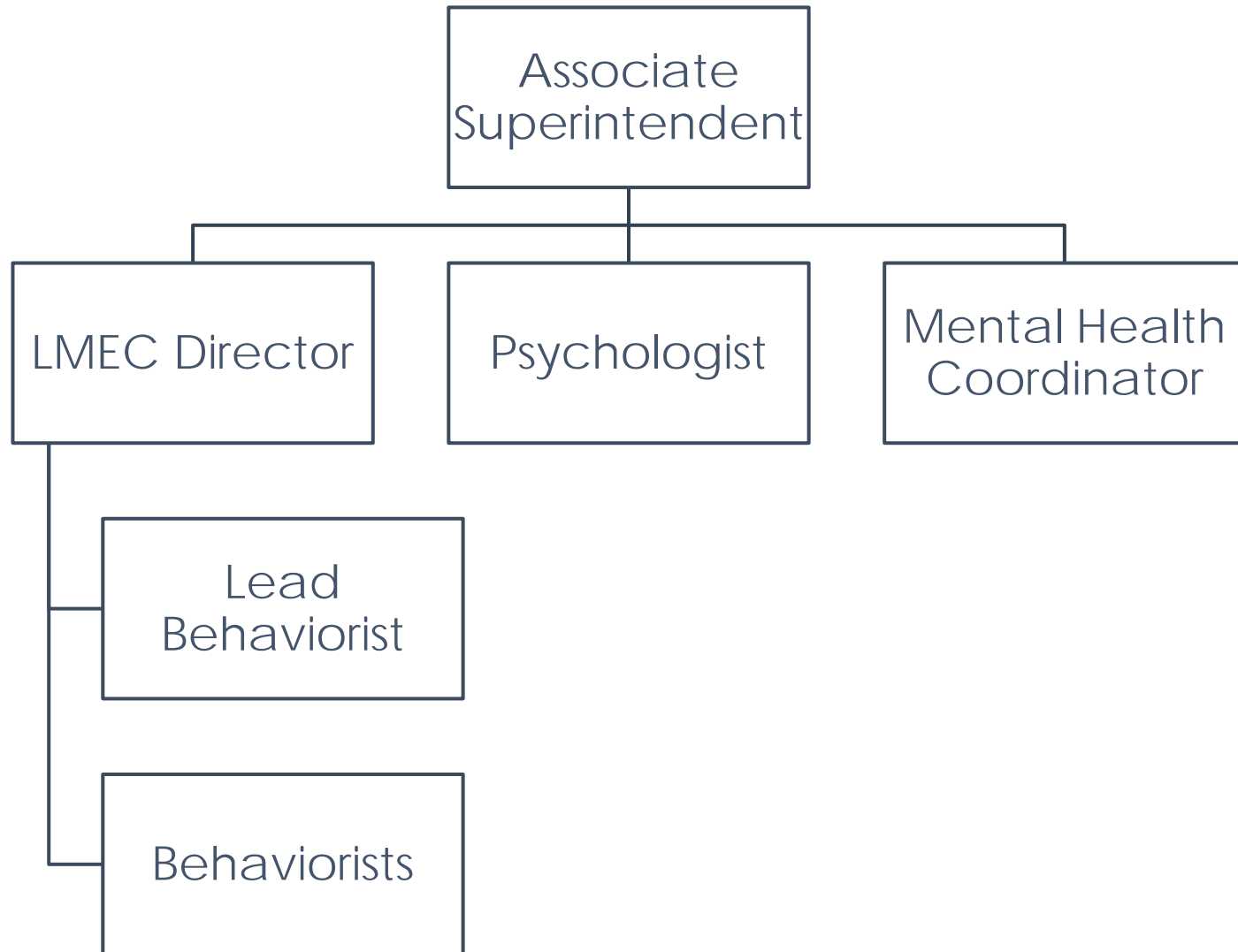
Behaviorist

- Assigned to support specific caseloads, model alternative behaviors and suggest modifications

Primary Responsibilities:

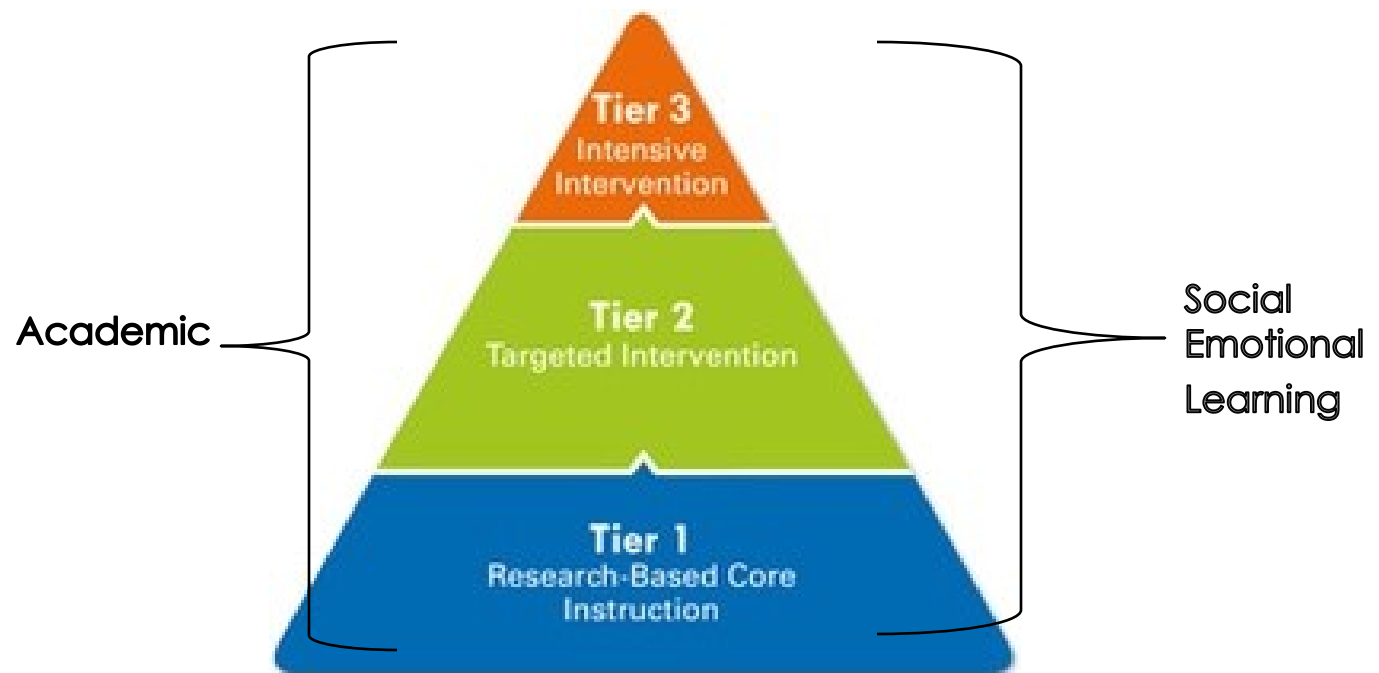
- Build and maintain effective communication
- Implement and monitor behavior intervention plans
- Facilitate integrated playgroups
- Collect data on behavioral goals
- Update goal benchmarks
- Teach functionally equivalent replacement behavior

Behavior and Mental Health Services PSD Staffing Structure



Response to Intervention (RTI) Social Emotional Learning

- Tier 1 (School Counselor and School Climate Teams)
- Tier 2 (School Psychologists and Mental Health Counselor)
- Tier 3 (Non-Public Schools and Outside Agencies)



Support Roles

ROLE OF SCHOOL PSYCHOLOGIST

- Annual and Initial Assessments
- Mental Health Support (Tier 1 & 2)
- Case Management
- Individualized Education Plan(IEP) Team Member
- Program Evaluation



When I grow up I want to be...
(a School Psychologist)

ROLE OF SCHOOL COUNSELOR

- Mental Health Support (Tier 1)
- Individual and Small Group Counseling (Tier 1)
- School Climate Activities (Tier 1)

ROLE OF BOTH PSYCHOLOGIST & COUNSELOR

- Student Success Team Member
- Parent Outreach
- School Climate and Safety Team Member

ROLE OF MENTAL HEALTH COUNSELOR

- Mental Health Support – IEP Driven
- Crises Intervention

Highlighted Summary

PSD Special Education Program

- Moving 1 SDC Preschool class to Sunset Ridge
- Adding a Mild/Moderate SDC Class at Sunset Ridge
- Adding a Mental Health Counselor (SELPA & District Funded)
- Continuing County Programs on PSD Campuses

Board Discussion

- Questions and Comments

